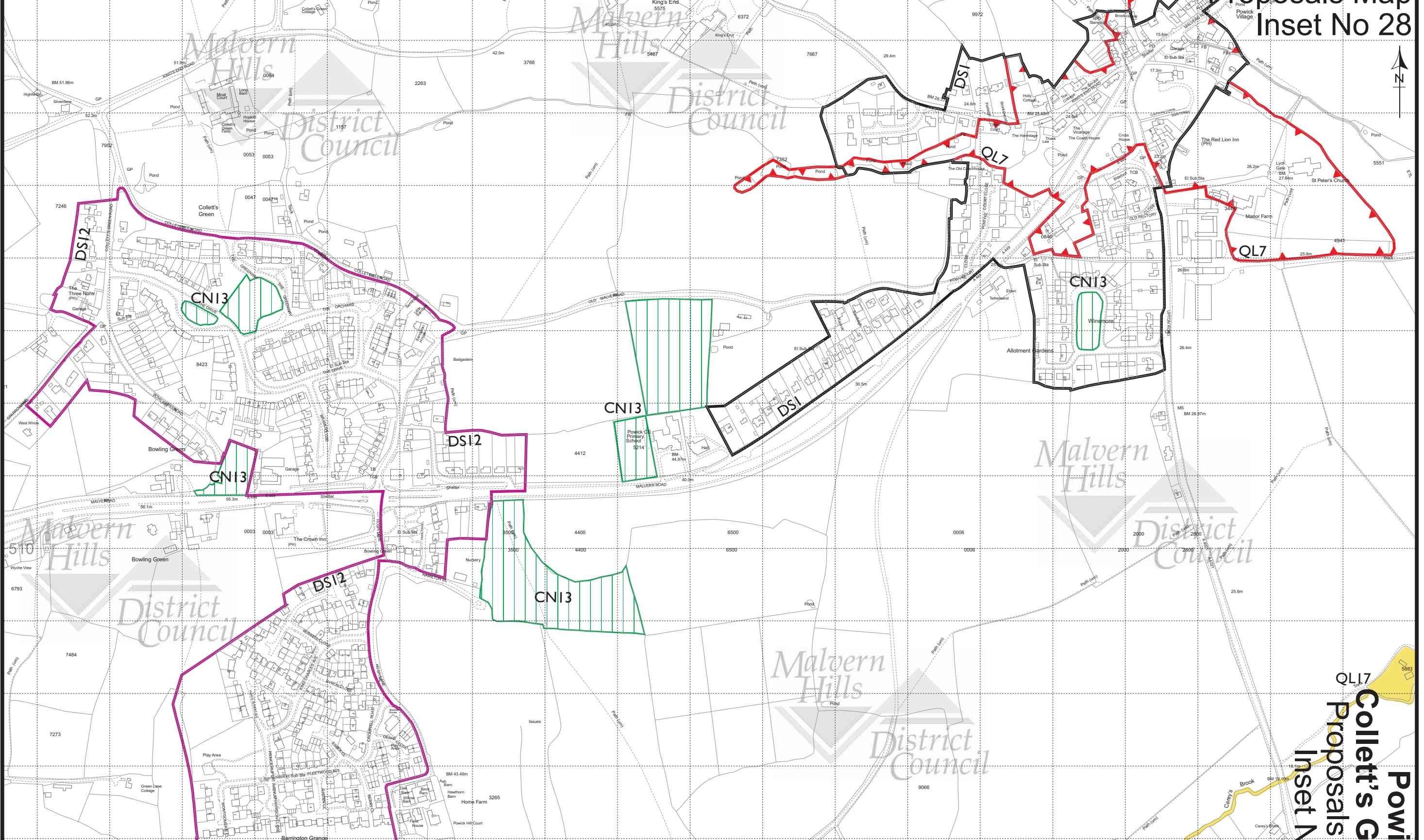


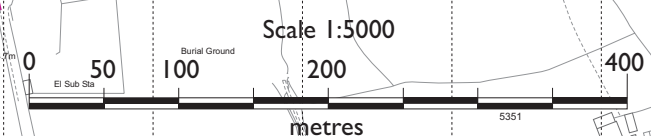
**Malvern Hills District Local Plan
Adopted July 2006**

Part of the area is within the Flood Zone and Groundwater Source Protection Zone, defined by the Environment Agency, see Appendix 8. Applicants are advised to contact the Environment Agency direct.

**Powick &
Collett's Green
Proposals Map
Inset No 28**



This map is reproduced from Ordnance Survey material with the permission of Ordnance Survey on behalf of the Controller of Her Majesty's Stationery Office. Crown Copyright. Unauthorised reproduction infringes Crown Copyright and may lead to prosecution or civil proceedings. (SUA 0100018590) (2006)



**Powick &
Collett's Green
Proposals Map
Inset No 28**