

**Proof of Evidence
Cultural Heritage
Appendix 1**

By

Rob Bourn

**Appeal under Section 78 of
Town and Country Planning Act 1990
By Hayfield Homes Construction Ltd**

Land at Berrow Green Road, Martley

**Appeal Ref:
APP/J1860/W/24/3348743**

Application Ref: M/23/01711/OUT

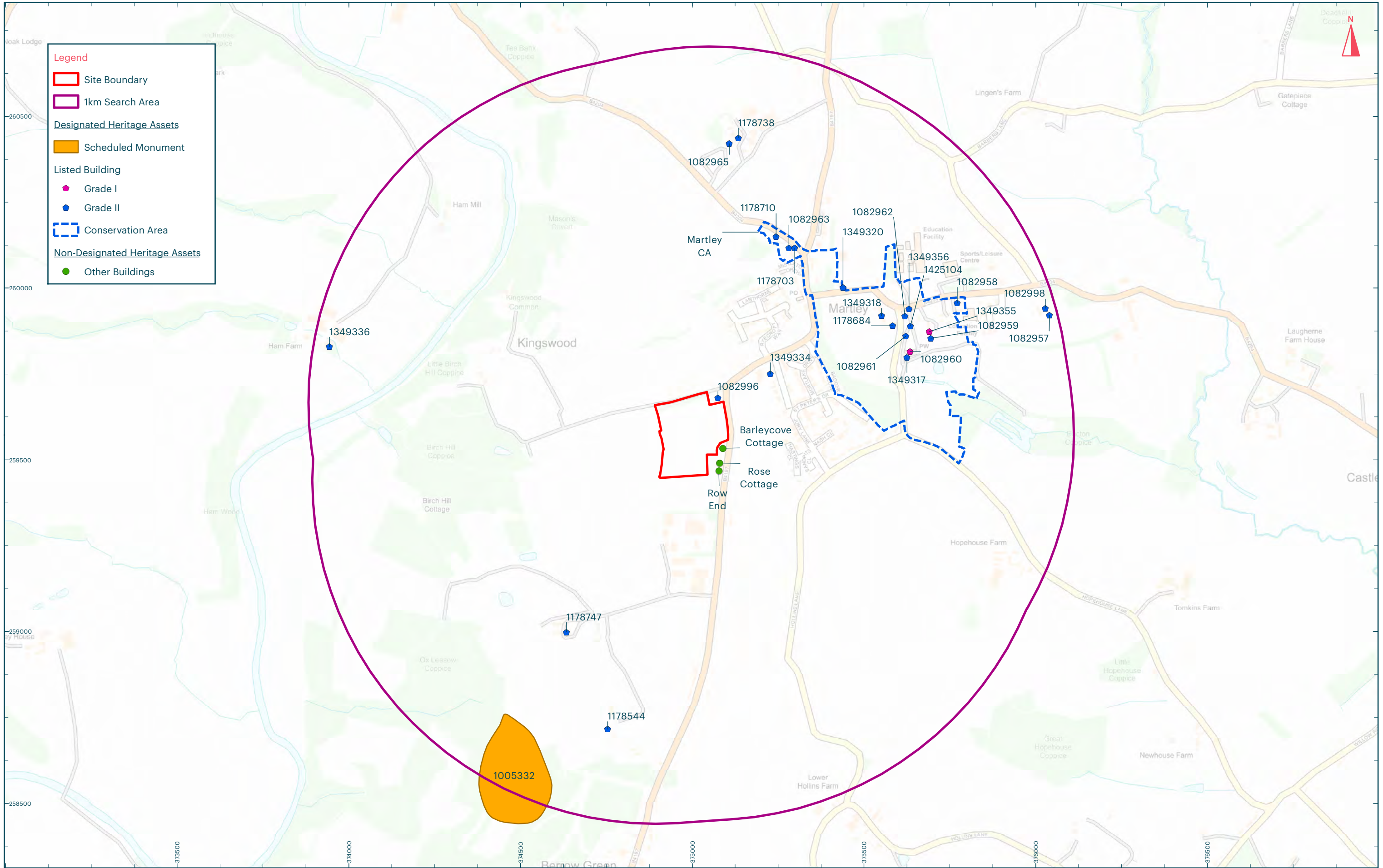
October 2024

Figures

- Fig. 1 Location of designated heritage assets
- Fig. 2 1884 OS 1:10,000 scale map
- Fig. 3 1954 OS 1:10,000 scale map
- Fig. 4 1974 OS 1:10,000 scale map
- Fig. 5 2000 OS 1:10,000 scale map
- Fig. 6 2000 1884 OS 1:10,000 scale map showing location of cumulative residential schemes
- Fig. 7 Layout of 20/01963/OUT Land at Berrow Green Road, Martley
- Fig. 8 Layout of M/23/00863/FUL Land At Hollins Lane, Martley

Plates

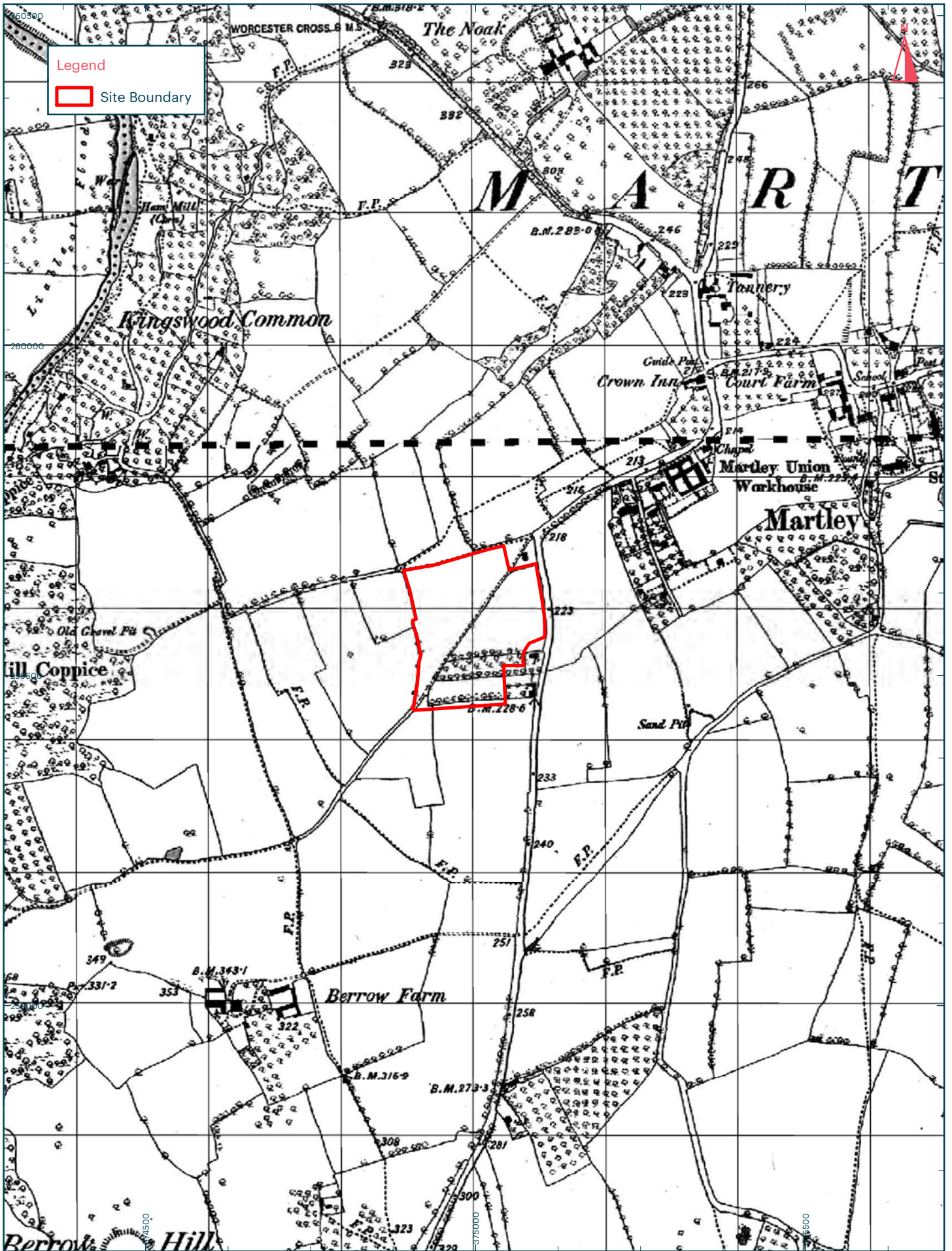
- Plate 1 View of Longstone Cottage from East side of Berrow Hill Road
- Plate 2 View across the appeal site toward Longstone Cottage from the PROW that crosses the appeal site
- Plate 3 View across appeal site toward Longstone Cottage from the PROW close to the cottage
- Plate 4 View toward Longstone Cottage across the existing allotments
- Plate 5 View toward Longstone Cottage from the B4197
- Plate 6 View SW toward Longstone Cottage from Berrow Court Road
- Plate 7 View toward Longstone Cottage across the cricket ground
- Plate 8 Row End and Rose Cottage across Berrow Green Road from the south east
- Plate 9 Row End and Rose Cottage across Berrow Green Road from the south east



Title:
Figure 1: Location of designated heritage assets
Address:
Land at Berrow Green Road, Martley

Scale at A3: 1:10,000
0 300m

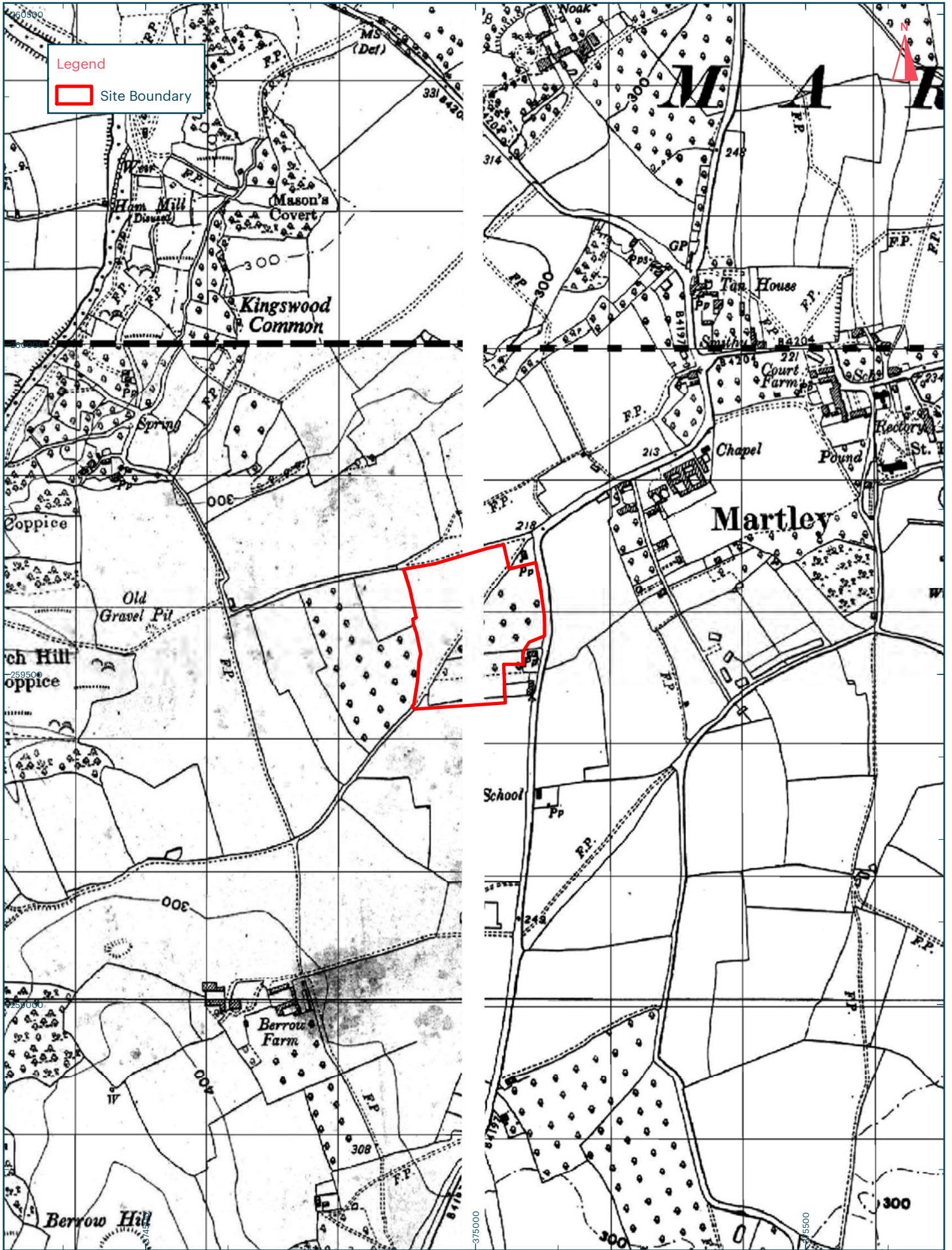




Title:
 Figure 2: 1884 OS 1:10,000 scale map
Address:
 Land at Berron Green Road, Martley

Scale at A4: 1:7,500

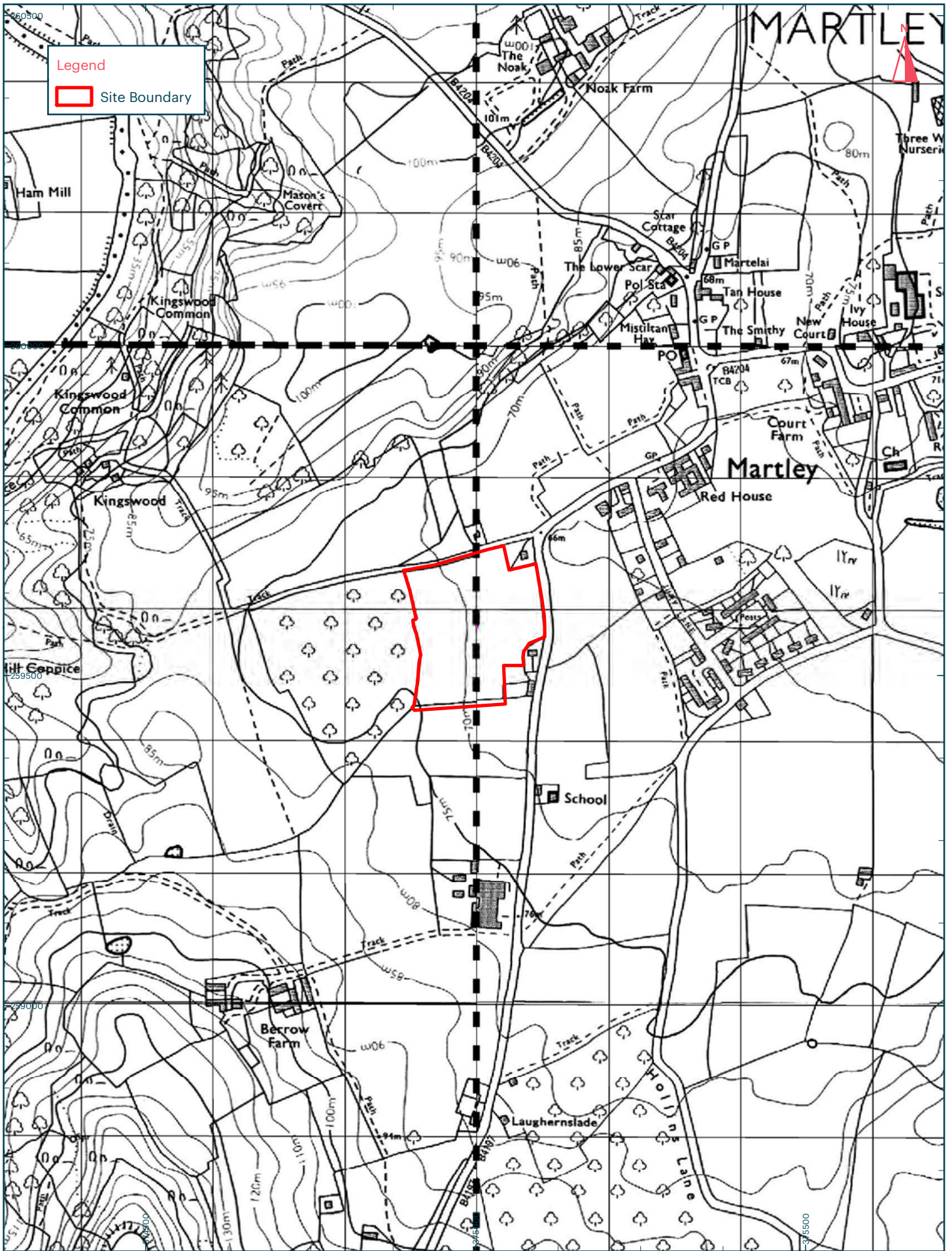




Title:
Figure 3: 1954 OS 1:10,000 scale map
Address:
Land at Berron Green Road, Martley

Scale at A4: 1:7,500

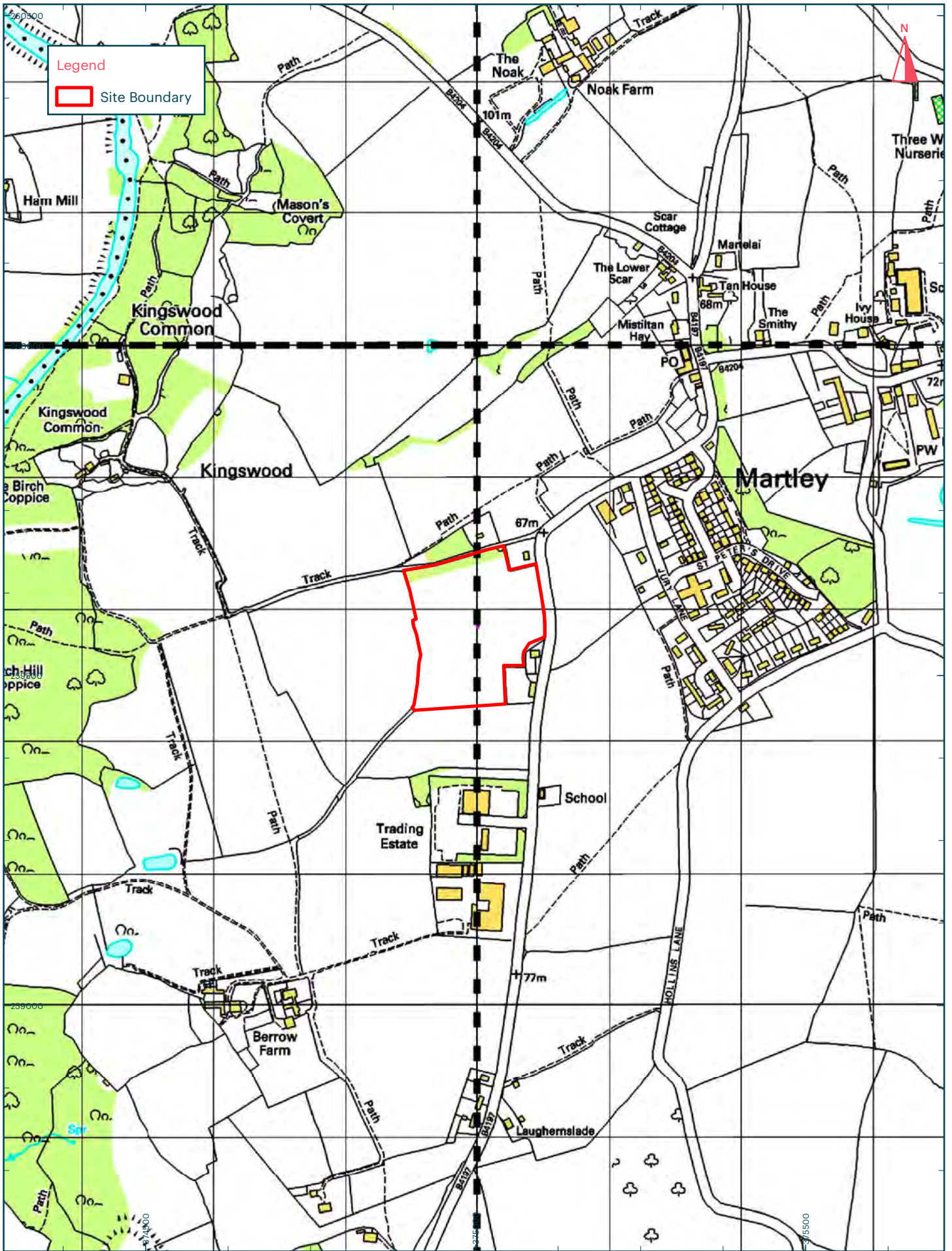




Title:
 Figure 4: 1974 OS 1:10,000 scale map
Address:
 Land at Berrow Green Road, Martley

Scale at A4: 1:7,500

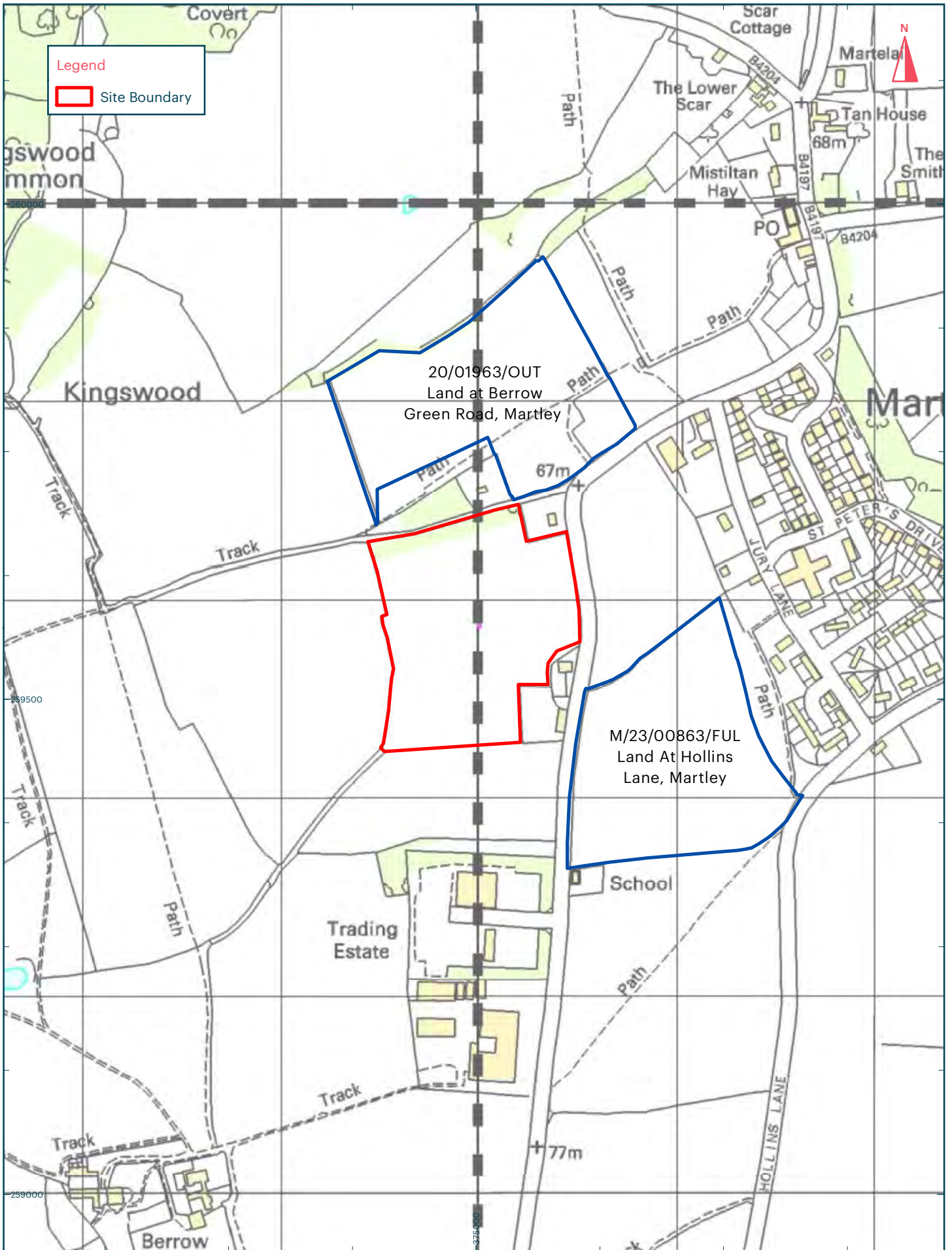




Title:
 Figure 5: 2000 OS 1:10,000 scale map
Address:
 Land at Berron Green Road, Martley

Scale at A4: 1:7,500





Title: Figure 6: 2000 1884 OS 1:10,000 scale map showing location of cumulative residential schemes

Address:
Land at Berrow Green Road, Martley

Scale at A4: 1:5,000





GENERAL
DO NOT SCALE FROM THIS DRAWING. CHECK ACCURACY OF DIMENSIONS ON SITE. DISCREPANCIES BETWEEN SCALE, DIMENSIONS, DRAWINGS OR SPECIFICATION ARE SUBJECT TO VERIFICATION BEFORE PURCHASING, MANUFACTURE OR WORK PROCEEDS. CONTRACTOR TO BE RESPONSIBLE FOR ANY DISCREPANCIES AFTER DRAWING APPROVED.

THIS DRAWING, DESIGN AND THE ILLUSTRATED WORKS ARE COPYRIGHT OF BOUGHTON BUTLER LIMITED AND MAY NOT BE REPRODUCED BY A THIRD PARTY WITHOUT WRITTEN CONSENT.



KEY

- Public open space
19,381sqm (46%)
- Affordable units
- Single storey units

Indicative accommodation schedule		
Affordable		
12 no.	1-2 bed	8-11, 28-31, 35-38
11 no.	3 bed	26,27, 39-47
7 no.	4 bed	4-7, 32-34
	30 units	
Open market		
12 no.	1-2 bed	2,3,12-15, 20,21, 22-25
11 no.	3 bed	1, 16-18, 48, 50-55
7 no.	4 bed	19, 48, 56-60
	30 units	
Total	60 units	

BOUGHTON BUTLER
ARCHITECTURE • PLANNING • DEVELOPMENT
1 CRICKLE TERRACE, NORTON, WORCESTER WR5 2DQ
Tel: (01905) 723544
Email: architects@boughtonbutler.co.uk
planning@boughtonbutler.co.uk
Web: www.boughtonbutler.co.uk

Client
Marsten Developments

Project
Martley Sandyfields,

Title
Proposed Indicative masterplan

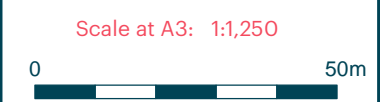
Date
11 MAY 2021 DS

Scale
1:1000@A3

Job No.	Dwg No.	Rev
1911	020	D

INDICATIVE

Title:
Figure 7: Layout of 20/01963/OUT Land at Berron Green Road, Martley
Address:
Land at Berron Green Road, Martley



© Historic England (2024). Contains OS data © Crown copyright and database right (2024).
© Ordnance Survey maps reproduced with the sanction of the controller of HM Stationery Office.
Licence No: 100056706. Data contained in this material was obtained on 23.10.24



This drawing is the copyright of Lioncourt Homes Ltd and has been produced for planning purposes only. Such drawings can be scaled but are not to be used for construction or sales documents.

- ### LEGEND & KEY
- PLANNING APPLICATION BOUNDARY
 - EXISTING TREES/VEGETATION TO BE RETAINED (SEE ARBORICULTURAL REPORT)
 - PROPOSED TREE & ASSOCIATED SUDS PIT (WHERE APPLICABLE, SEE SOFT LANDSCAPE PLANS)
 - PROPOSED INDICATIVE SHRUB PLANTING (SEE SOFT LANDSCAPE PLANS)
 - PROPOSED INDICATIVE HEDGEROW & PLANTING (SEE SOFT LANDSCAPE PLANS)
 - BOUNDARY - SCREEN WALL (SEE BOUNDARY TREATMENTS PLAN)
 - BOUNDARY - FENCERAILINGS (SEE BOUNDARY TREATMENTS PLAN)
 - CHANGE IN SURFACE (BLOCK PAVING (NON-RAISED TABLE))
 - BCP
 - BIN COLLECTION POINT
 - SHED & CYCLE STORE 1.8 X 2.4M
 - 150W DRAINAGE EASEMENT LINE
 - AFFORDABLE HOUSING - SOCIAL RENT
 - AFFORDABLE HOUSING - FIRST HOMES
 - FOCAL BUILDING (SEE HOUSETYPE DRAWINGS)
 - SHALE (SEE DRAINAGE PLANS)
 - INDICATIVE LAWN HARDENING (SEE LANDSCAPE PLANS)
 - STONE GATEWAY WALL
 - CHIMNEY
 - PERMEABLE PAVING CROSSING VERGE

REV.	DESCRIPTION	DATE
G	Layout updated to suit LPA comments (LC+DR)	24-11-22
F	Layout updated to suit LPA comments (LC+DR)	07-10-22
E	Facilities (swimming pool, access) (LC+DR)	25-09-22
D	Site layout updated (LC+DR)	05-09-22
C	Site layout updated (DA-MB)	17-05-22
B	Site layout updated (LC+DR)	07-04-22
A	Attenuation pond updated (LC+DR)	07-12-21
-	First Issue (LC+DR)	28-09-21

LIONCOURT HOMES
 L: 01905 755157
 e: info@lioncourthomes.com
 w: www.lioncourthomes.com
 Lioncourt Homes, 3 Apex Park
 Wainwright Road, Nuneaton
 Warwick, W84 9PU

PROJECT	MARTLEY FIELDS, MARTLEY
TITLE	PLANNING LAYOUT
DWG NO:	MAMF-PL-002
DRAWN BY:	LCH
DATE:	10/21
SCALE:	1:500
REV:	G

259500

375000

Title: Figure 8: Layout of M/23/00863/FUL Land At Hollins Lane, Martley
Address: Land at Berron Green Road, Martley

Scale at A3: 1:1,250
 0 50m



© Historic England (2024). Contains OS data © Crown copyright and database right (2024).
 © Ordnance Survey maps reproduced with the sanction of the controller of HM Stationery Office.
 Licence No: 100056706. Data contained in this material was obtained on 23.10.24



Plate 1: View of Longstone Cottage from East side of Berrow Hill Road



Plate 2: View across the appeal site toward Longstone Cottage from the PROW that crosses the appeal site

Address:
Land at Berrow Green Road, Martley

Not to Scale:
Illustrative Only





Plate 3: View across appeal site toward Longstone Cottage from the PROW close to the cottage



Plate 4: View toward Longstone Cottage across the existing allotments

Address:
Land at Berron Green Road, Martley

Not to Scale:
Illustrative Only





Plate 5: View toward Longstone Cottage from the B4197



Plate 6: View SW toward Longstone Cottage from Berron Court Road

Address:
Land at Berron Green Road, Martley

Not to Scale:
Illustrative Only





Plate 7: View toward Longstone Cottage across the cricket ground



Plate 8: Row End and Rose Cottage across Berron Green Road from the south east

Address:
Land at Berron Green Road, Martley

Not to Scale:
Illustrative Only



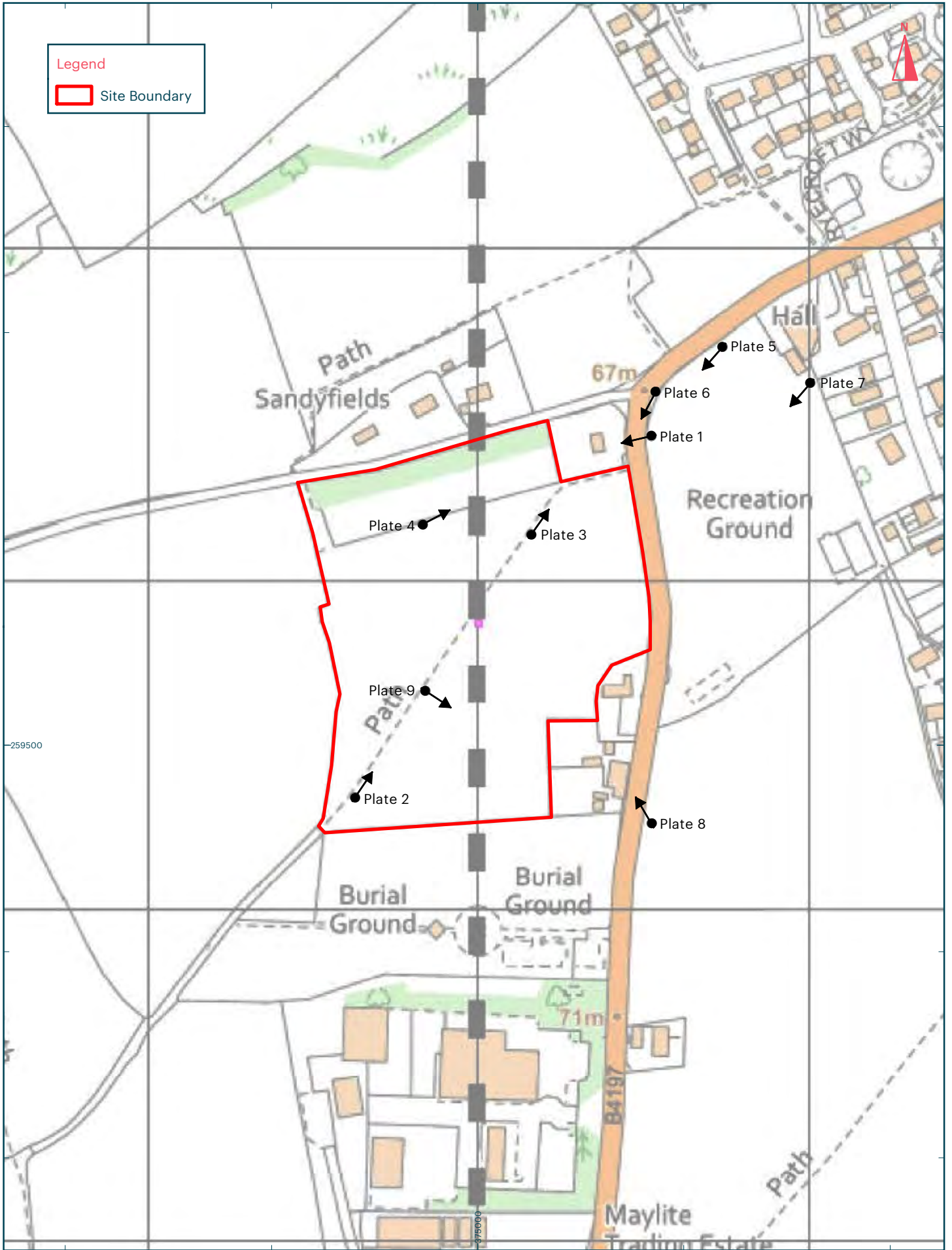


Plate 9: Row End and Rose Cottage across Berron Green Road from the south east

Address:
Land at Berron Green Road, Martley

Not to Scale:
Illustrative Only





Title:
Plate 10: Photograph Location Plan

Address:
Land at Berron Green Road, Martley

Scale at A4: 1:3,000

