

Site Map



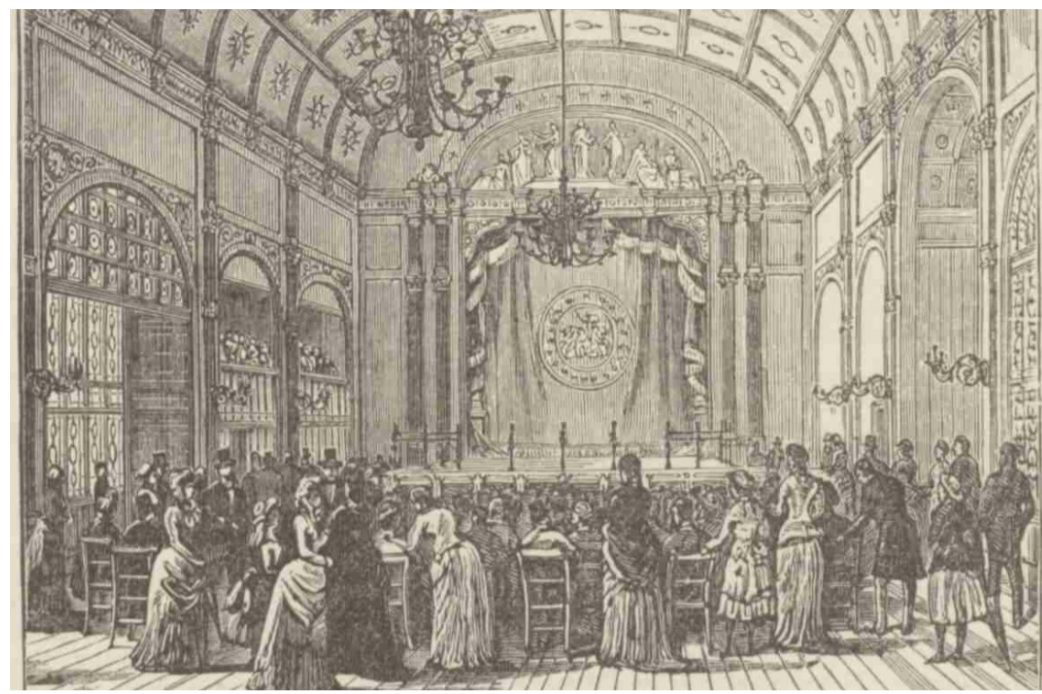
KEY

- Main Road
- Priory Park
- Malvern Theatre
- Proposed extension
- Bus Stop
- Vehicle route
- Pedestrian route

1. Priory Church of St Mary and St. Michael - Grade I Listed
2. The Abbey Hotel with Adjoining Wing to North West - Grade II Listed
3. ParkView-Grade II Listed
4. The Council House (Malvern Hills District Council Offices) - Grade II* Listed
5. Priory Lodge - Grade II Listed
6. SPA Cottage - Grade II Listed
7. Bandstand - Grade II Listed
8. Holland House - Grade I Listed
9. The Grange - Grade II Listed
10. Malvern Theatre
11. New Studio
12. New Ampitheatre

History

Malvern Assembly Room 1884



Interior view of the Great Hall, now Malvern Theatre.



The Concert Hall and Terrace 1928



A cinema was constructed in 1923 on the Grange Road side. The Winter Gardens complex was bought by the Council in the 1920s and refurbished, transforming the Assembly Rooms by raking the stalls and adding a balcony. The conservatory was demolished and the concert hall constructed. The first Malvern Festival took place in 1929 and the successful festivals presented both film and theatre and were supported by both Edward Elgar and George Bernard Shaw.



George Bernard Shaw Planting Mulberry Tree in Priory Park with the views of Winter Gardens in the background, 1939

1965 Malvern Winter Gardens



The Malvern Festival Theatre Trust was incorporated in February 1965. The theatre and cinema were extensively refurbished and the first summer season of plays presented by the theatre ran from July 8th to October 2nd, 1965, with J B Priestley performing the opening ceremony.

1996 Malvern Theatres Extension

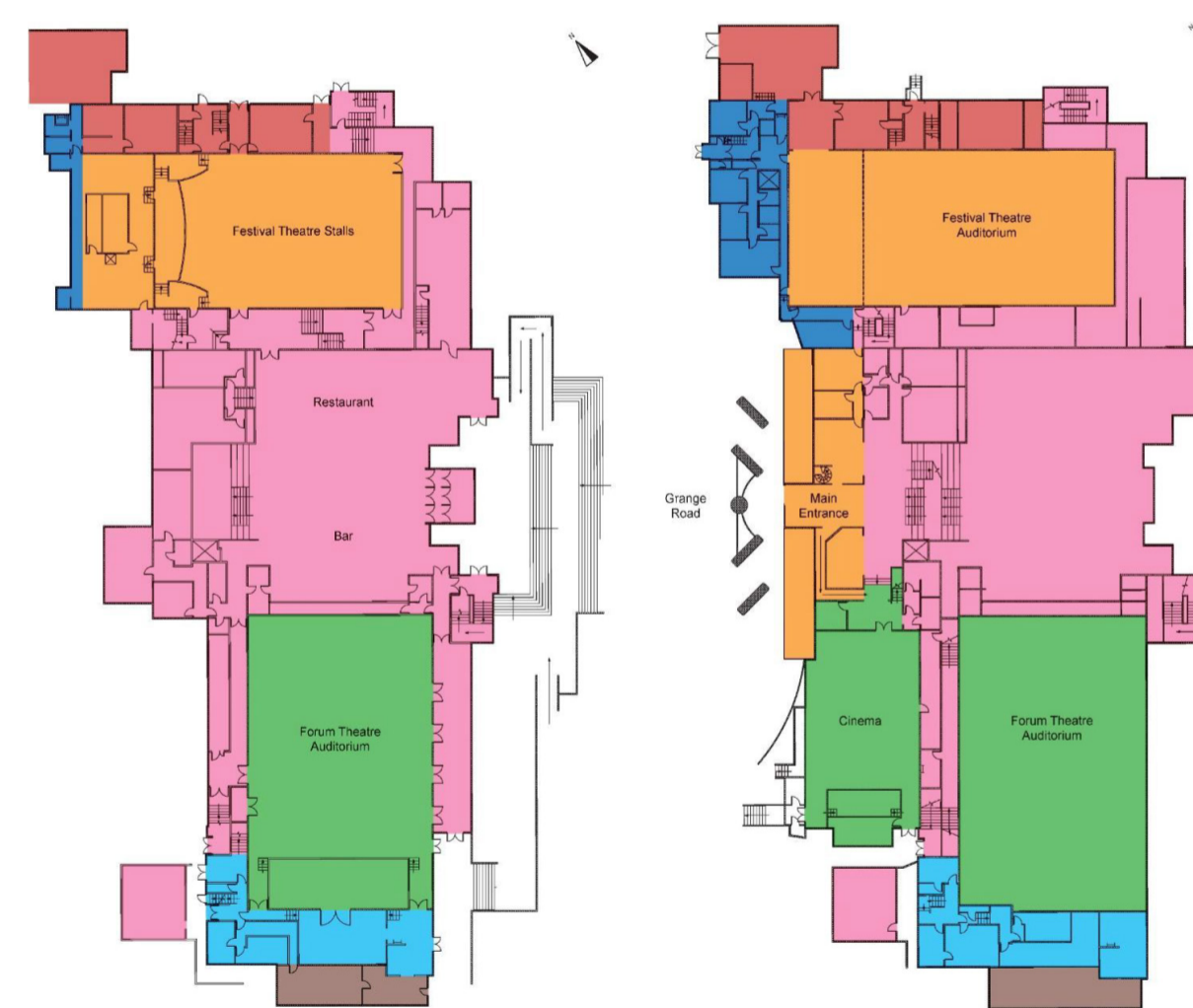


The Theatre and Winter Gardens were significantly extended in the late 1990s by RHYVL architects, with a new central foyer around the route to the park funded by the National Lottery Development Fund.

Context



Aerial Photograph of Malvern Theatres and Park Priory



Lower Ground Floor Historical Development Plan Ground Floor Historical Development Plan

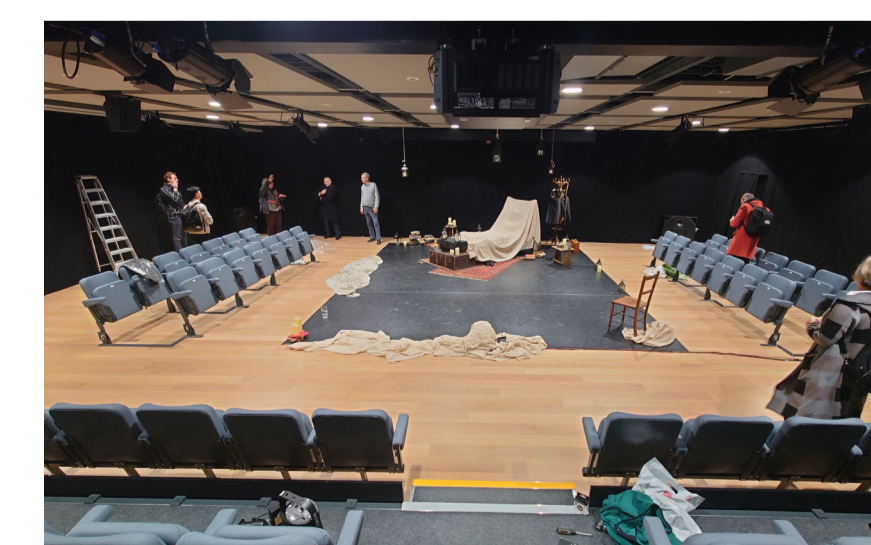
Key
 Late 19th Century (1880s) with notable alterations
 Late 19th/ 20th Century additions
 1920s
 Late 1940s
 Mid 1950s/ Early 1960s
 1970s
 Post 1997



Interior view of Forum Theatre



Interior view of Shaw Cinema



Interior view of Studio One



Interior view of Foyer

Malvern Theatres

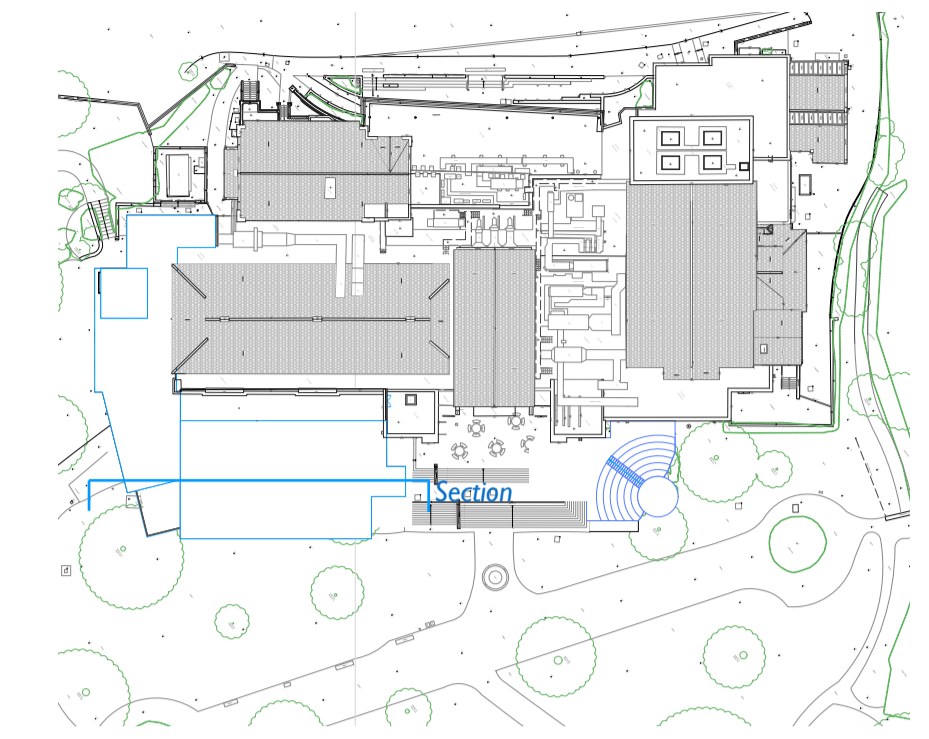
Studio Concept



Sectional Perspective with bleachers out

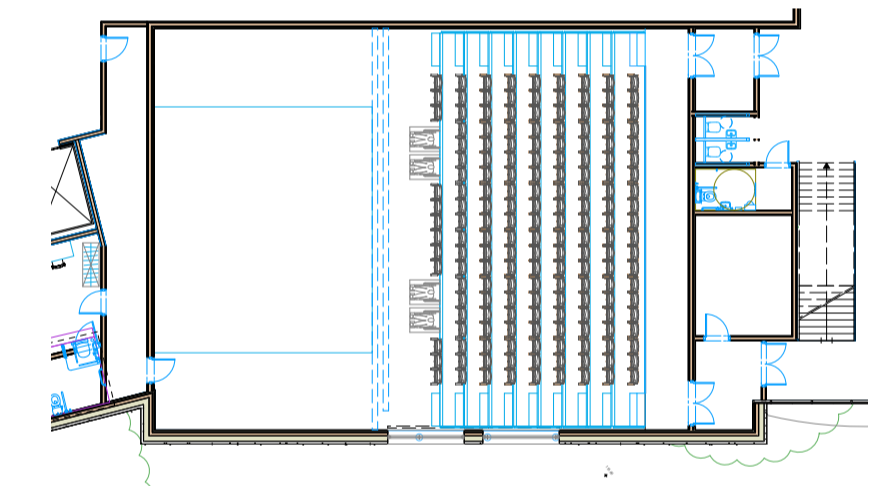


Sectional Perspective with bleachers away

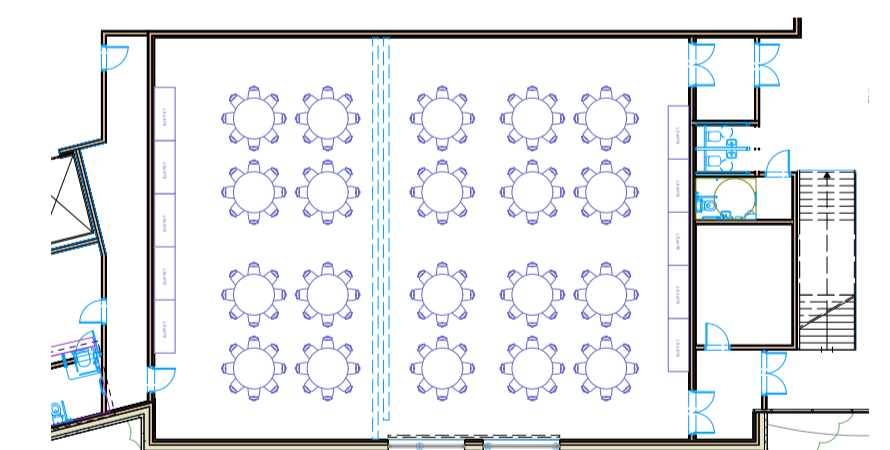


Site Plan (not to scale); showing section location

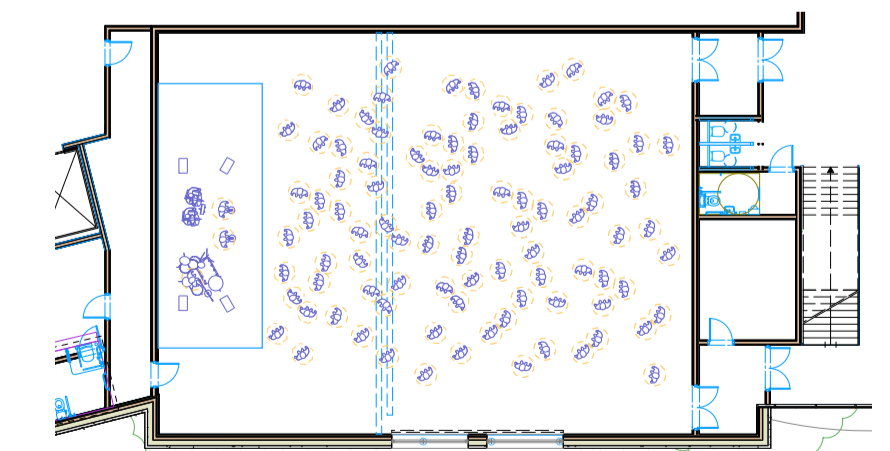
Studio Configurations



Proposed Studio Theatre (Performance)



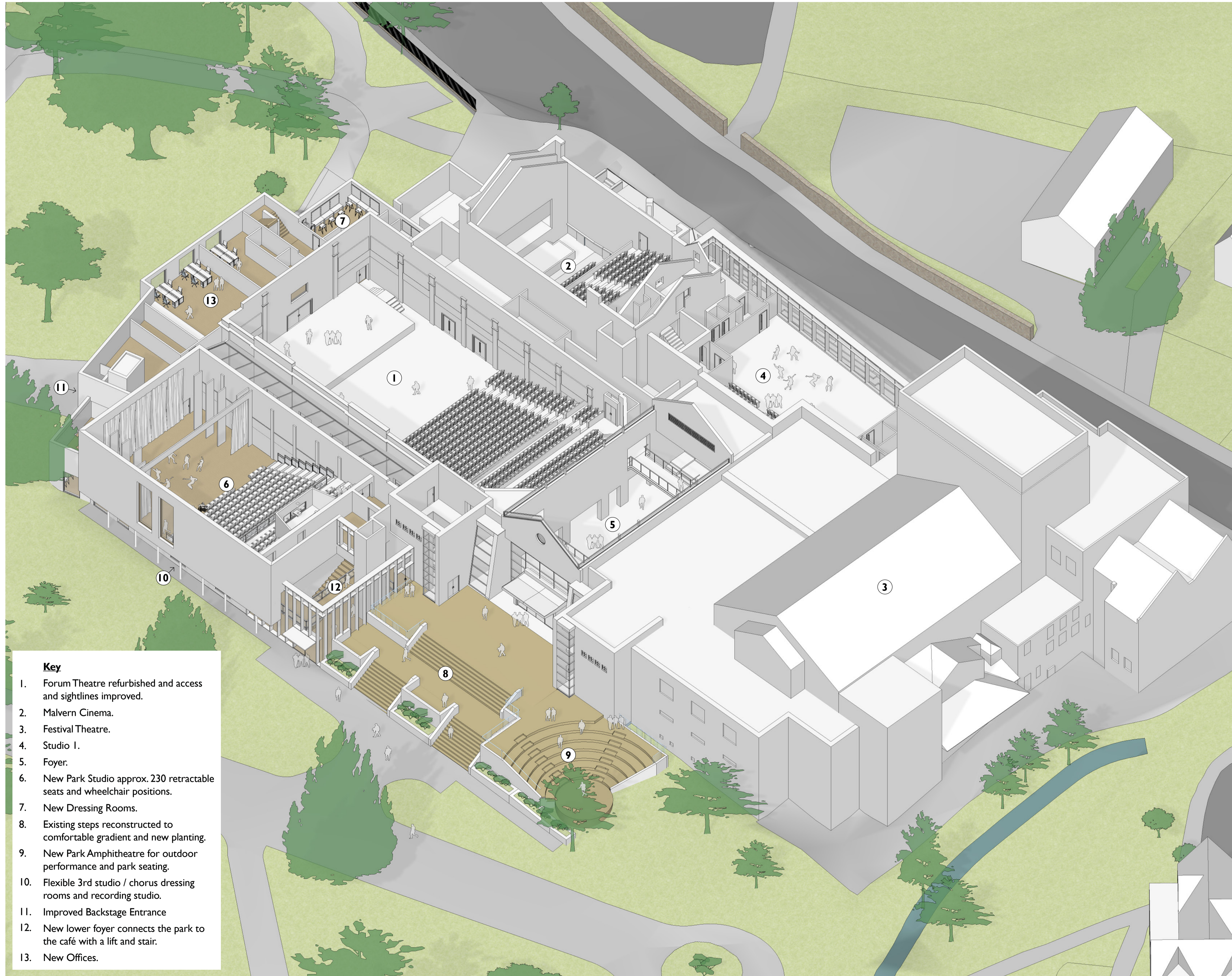
Proposed Studio Theatre (Banquet)



Proposed Studio Theatre (Gig)

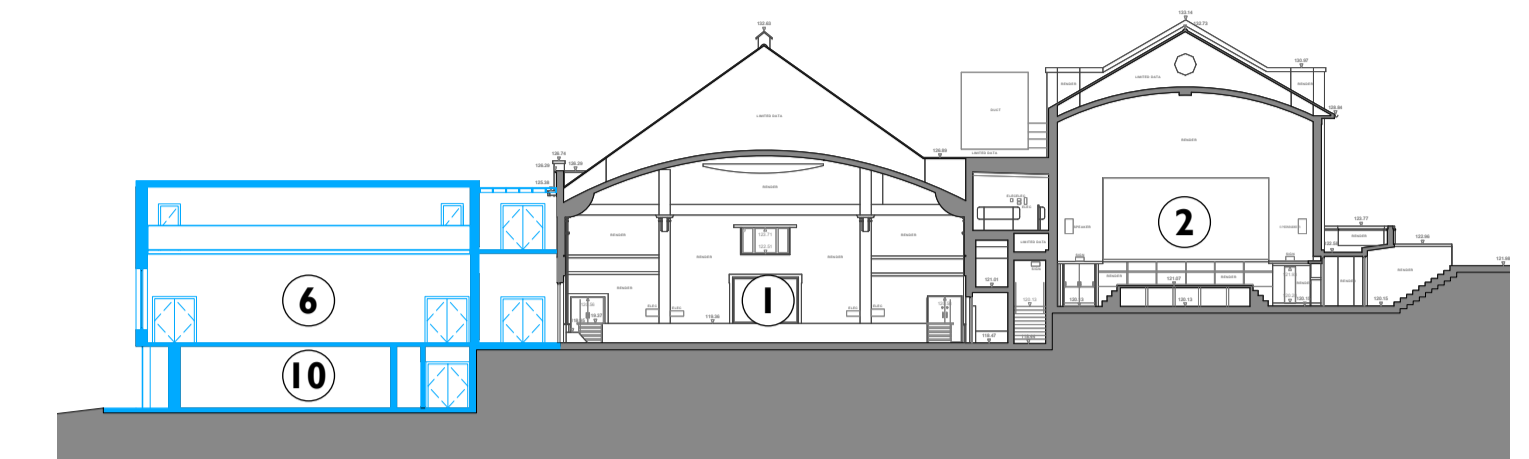
Malvern Theatres

Proposed Layout Plan

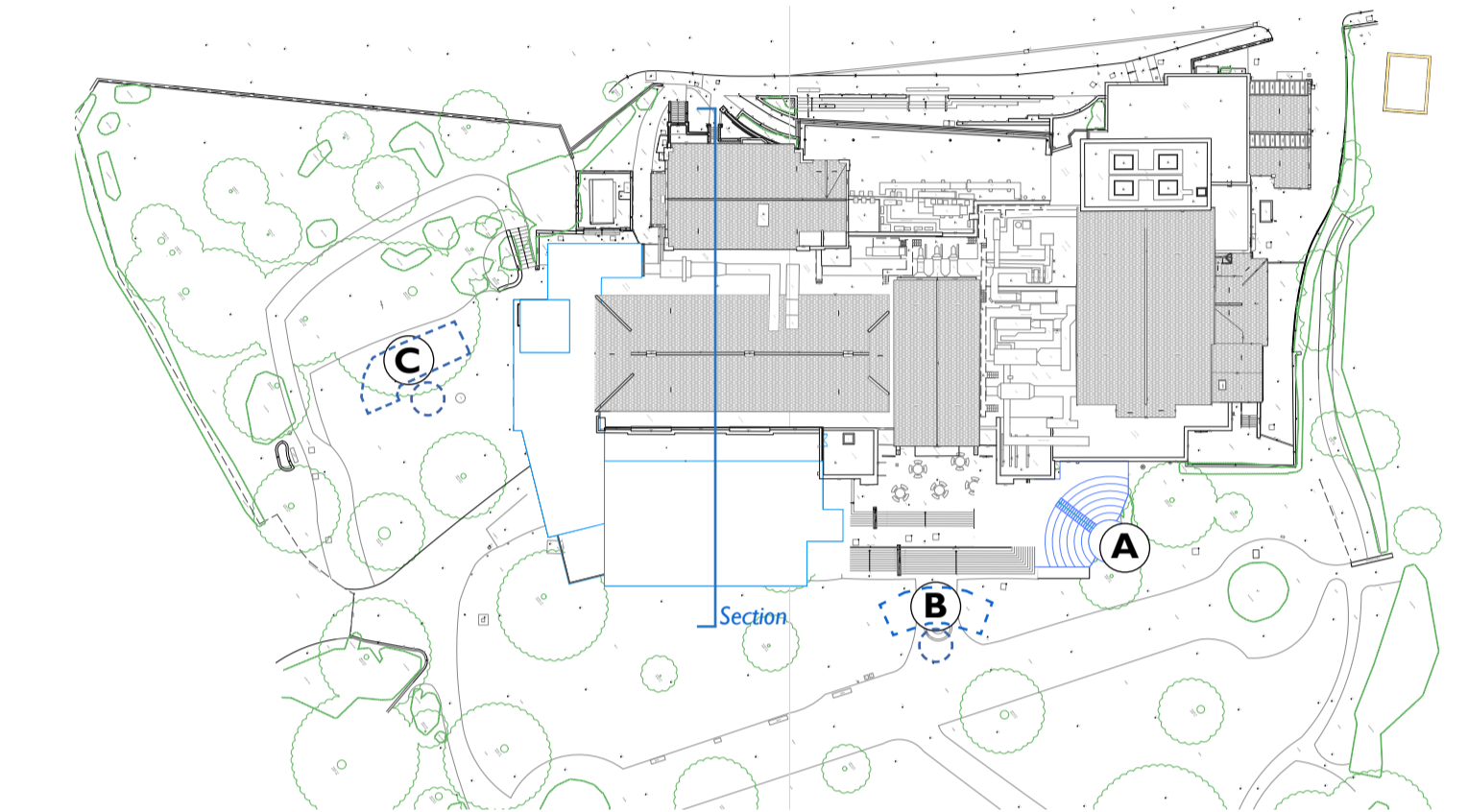


- Key**
1. Forum Theatre refurbished and access and sightlines improved.
 2. Malvern Cinema.
 3. Festival Theatre.
 4. Studio I.
 5. Foyer.
 6. New Park Studio approx. 230 retractable seats and wheelchair positions.
 7. New Dressing Rooms.
 8. Existing steps reconstructed to comfortable gradient and new planting.
 9. New Park Amphitheatre for outdoor performance and park seating.
 10. Flexible 3rd studio / chorus dressing rooms and recording studio.
 11. Improved Backstage Entrance
 12. New lower foyer connects the park to the café with a lift and stair.
 13. New Offices.

Site Landscape



Proposed Section (not to scale)



Site Plan (not to scale); Potential locations for amphitheatre marked A, B, and C

Amphitheatre & Stairs Concept

