

# MALVERN HILLS DISTRICT COUNCIL OPEN SPACE, SPORT & RECREATION STUDY: ASSESSMENT REPORT

---

## **PART 28: SQUASH COURTS**

28.1 There are two sites with squash courts in Malvern Hills District. Both are private membership clubs and not therefore accessible for pay and play opportunities.

### **Analysis of provision**

28.2 There are two private clubs with squash court provision. Malvern Squash Club has its own two-court facility in Malvern Wells. The facility is outdated with limited changing facilities. Access is via the back of a set of flats and is therefore not accessible for disabled players. There is no formal car park and players are forced to park on the main road.

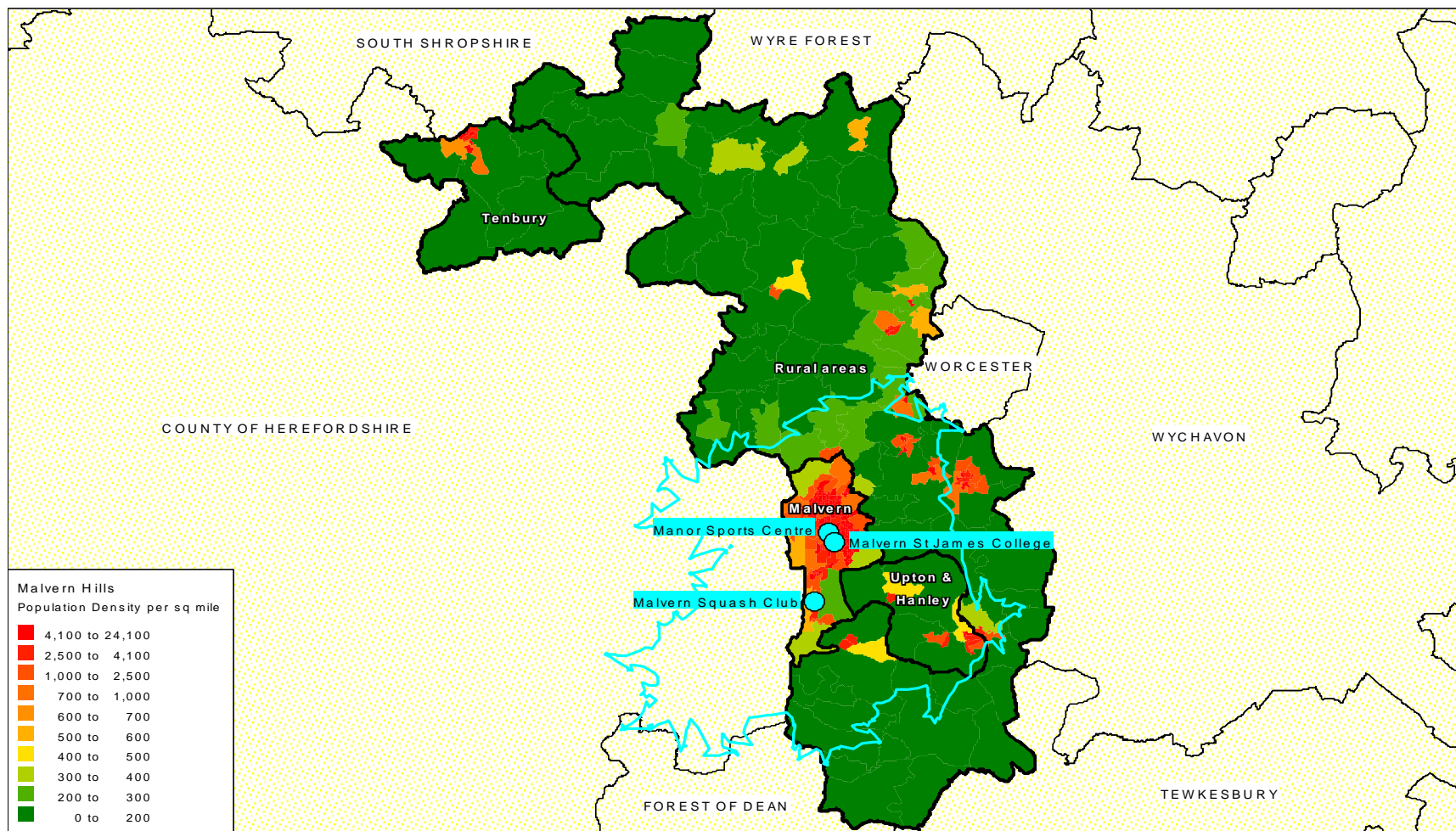
28.3 Manor Park Sports Club has four squash courts, one of which is glass-backed. All the courts are refurbished on an annual basis. The facility is well used (around 200 members). The Chase High School also uses the courts on an ad-hoc basis for its pupils.

28.4 In addition, there are two squash courts located at Malvern College and two located at Malvern St. James College (in the Dome). Both facilities are underused and there is no demand from the community for them. However, like the remainder of the facilities at Malvern College, it is unlikely that these courts would be available for community use even if there was sufficient demand to open them.



# MALVERN HILLS DISTRICT COUNCIL OPEN SPACE, SPORT & RECREATION STUDY: ASSESSMENT REPORT

Figure 28.1: Location of squash courts in Malvern Hills District with 15 minute drive time catchment



# MALVERN HILLS DISTRICT COUNCIL OPEN SPACE, SPORT & RECREATION STUDY: ASSESSMENT REPORT

---

## Summary of key sport issues

### *Malvern Squash Club*

- 28.5 Malvern Squash Club has around 110 members, around 15 of which are juniors. There is no junior section, and any juniors participate in the adult leagues. There are no plans to develop a junior section. A centre league operates at the venue and players are responsible for arranging their own matches and allocating courts via an internal first-come, first-served system. Consultation shows that membership levels have remained stagnant, although the courts are well used at peak times. The Club considers the poor participation levels as being indicative of the national decline in squash participation, and cites the lack of play in secondary schools as a key problem. The location of the Club in Malvern Wells is remote compared to the facility at Manor Park and this affects junior participation.
- 28.6 The Club would like to extend the current facility to provide a social bar area, which it believes will make the facility more attractive and drive up participation. However, there has been no identification of external funding to contribute to any possible extension.

#### **Squash summary**

##### ***Current provision***

- There are two sites with squash courts in Malvern Hills District.

##### ***Future provision***

- There is no need for additional provision in the District.

##### ***Other issues***

- Junior development could be improved at both clubs, but seems participation seems to be indicative of the national picture.